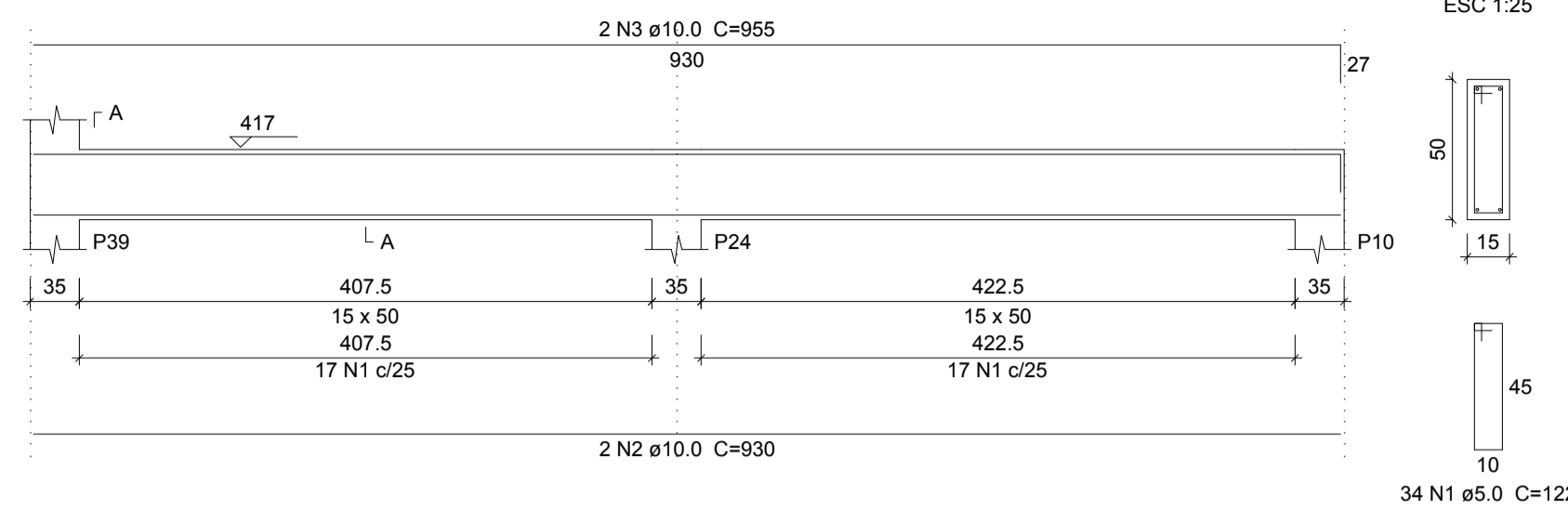
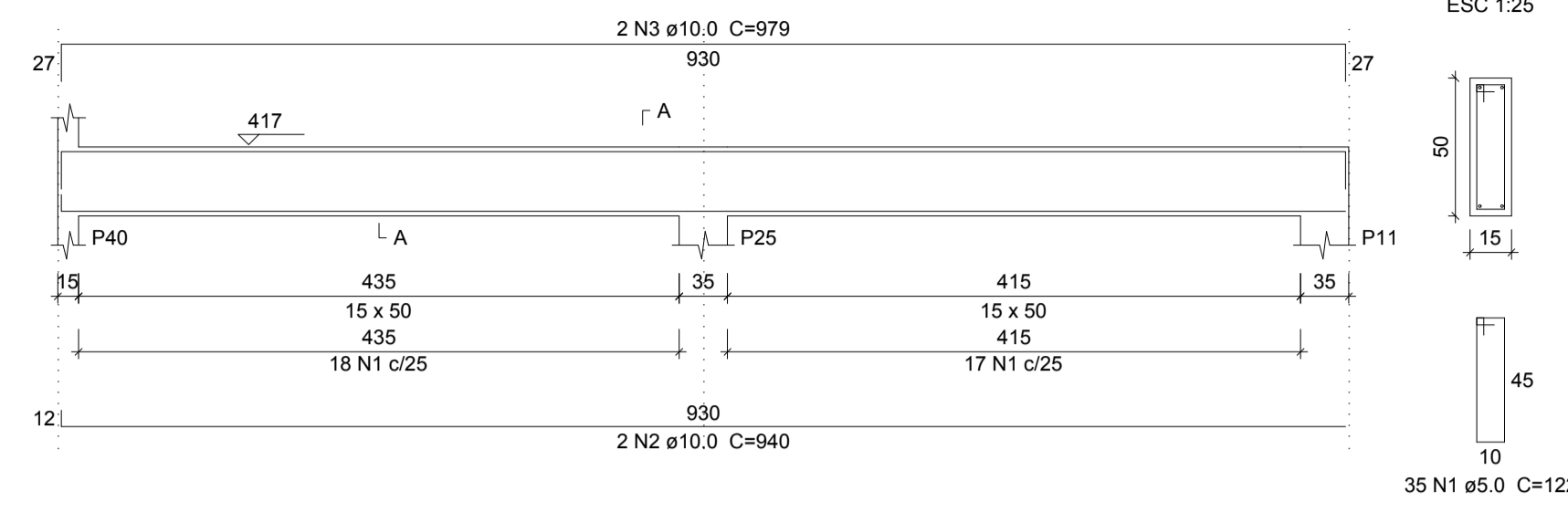


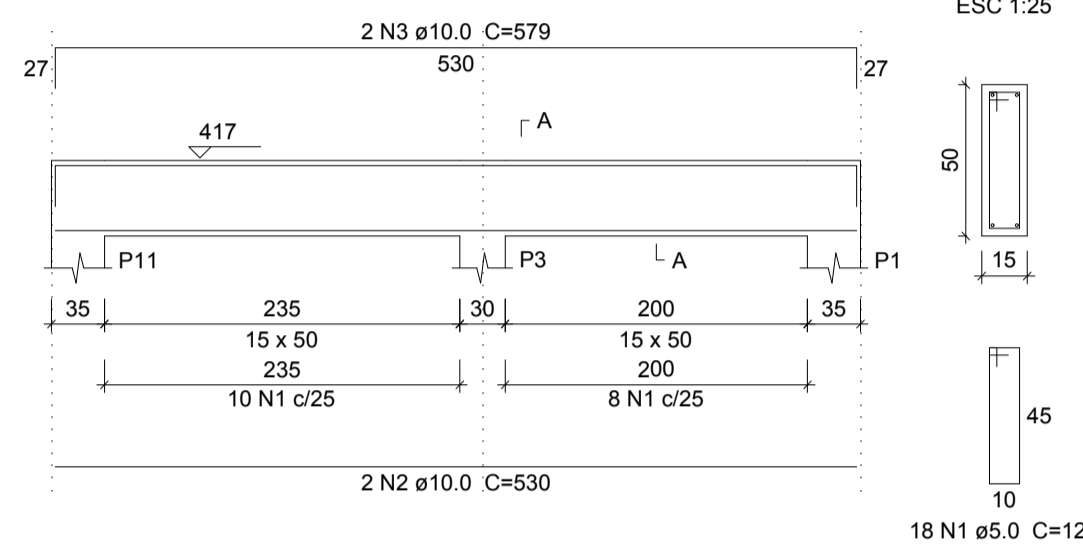
VR41
ESC 1:50



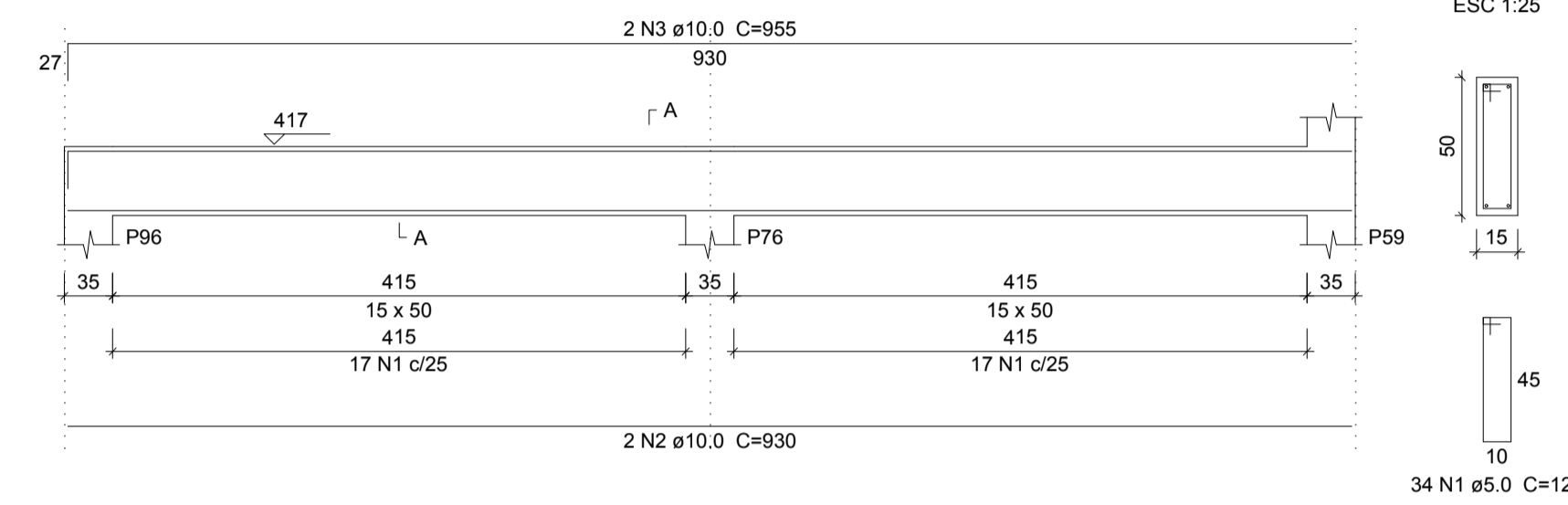
VR42
ESC 1:50



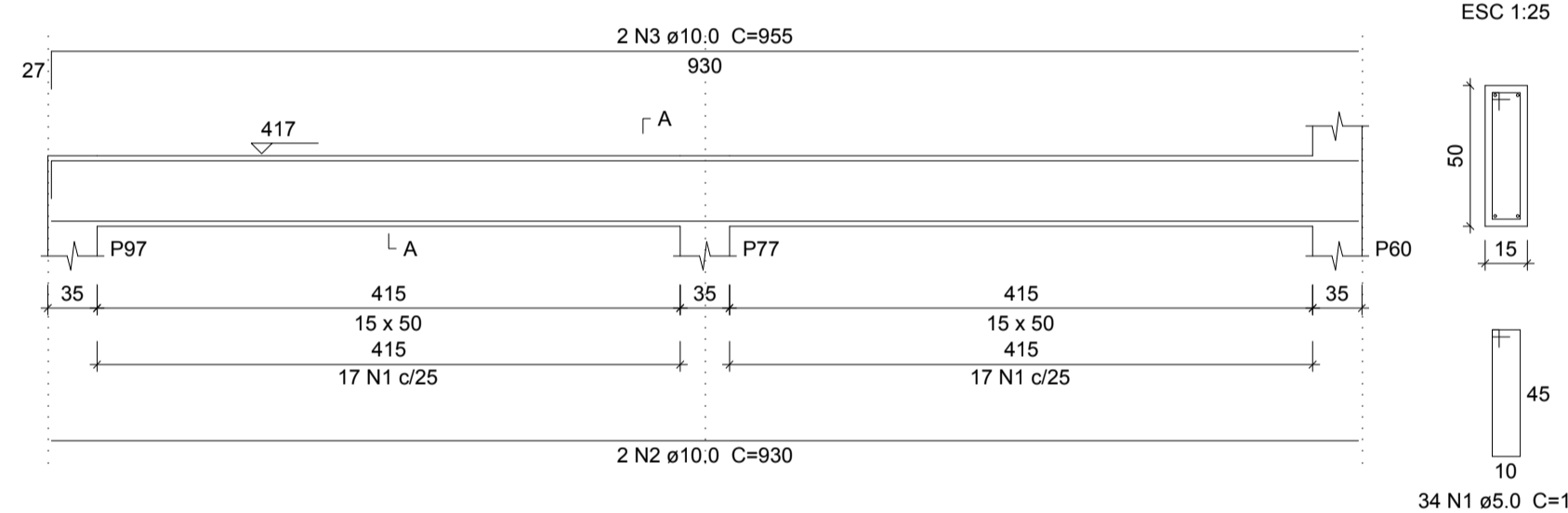
VR43
ESC 1:50



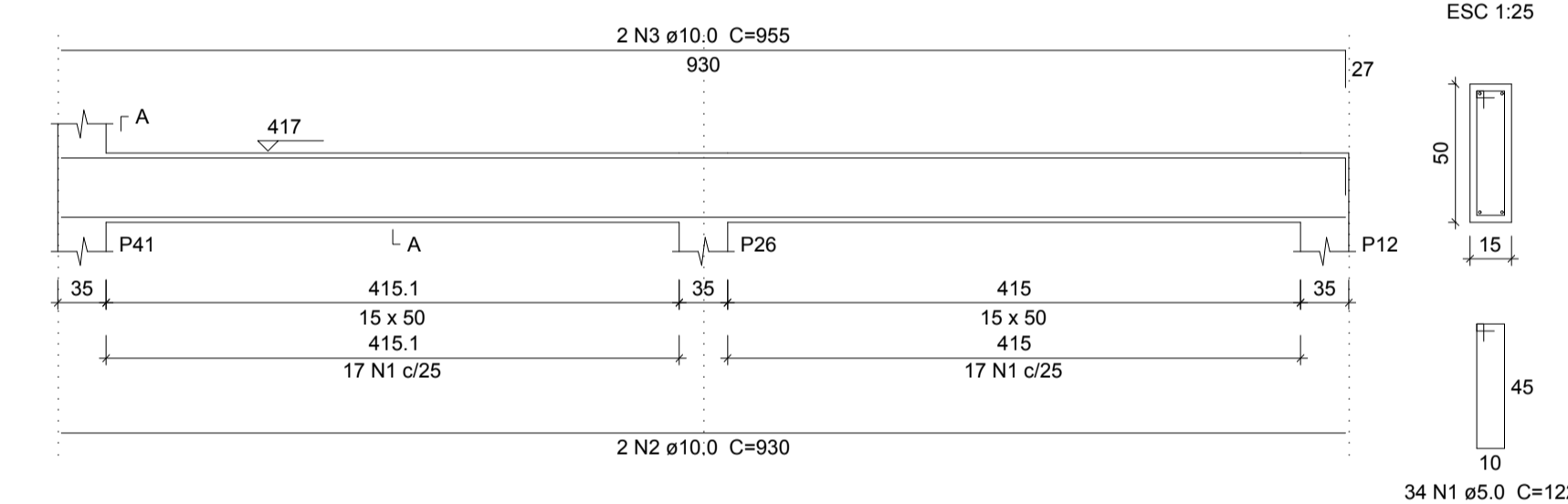
VR44
ESC 1:50



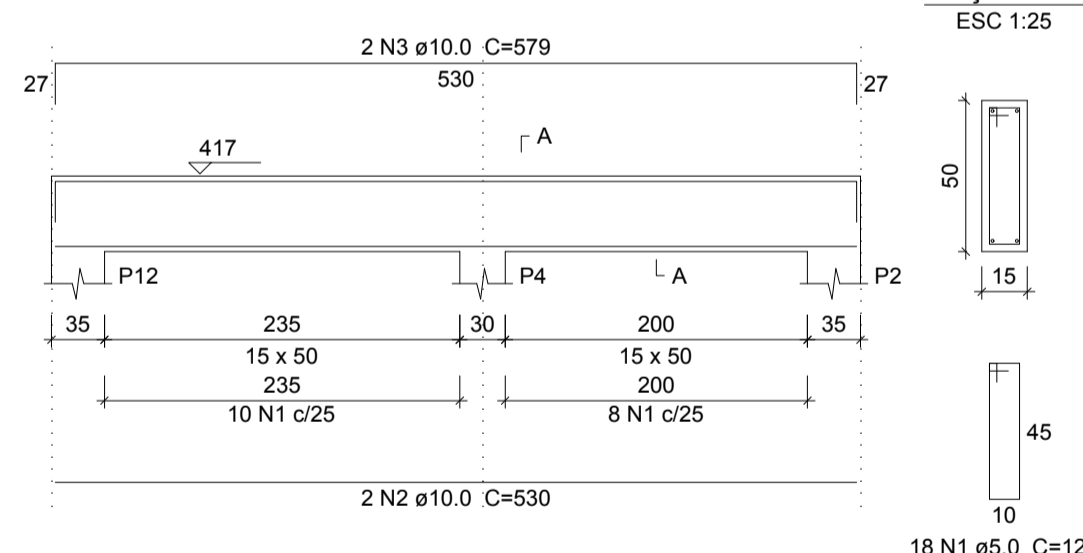
VR45
ESC 1:50



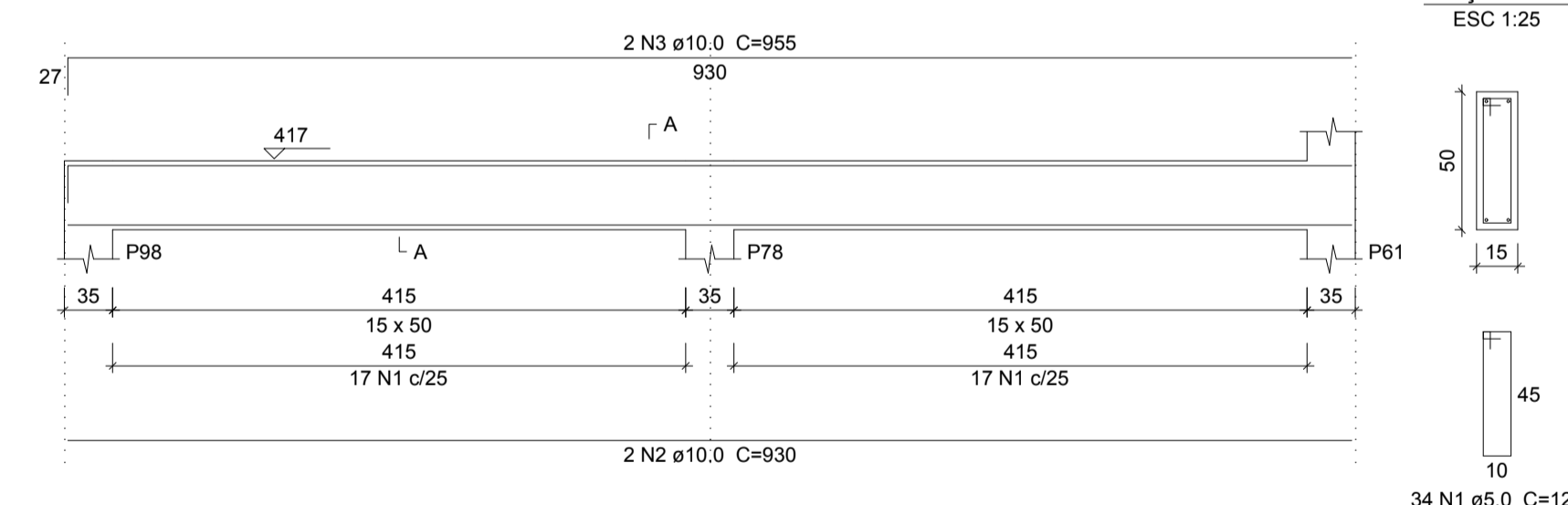
VR46
ESC 1:50



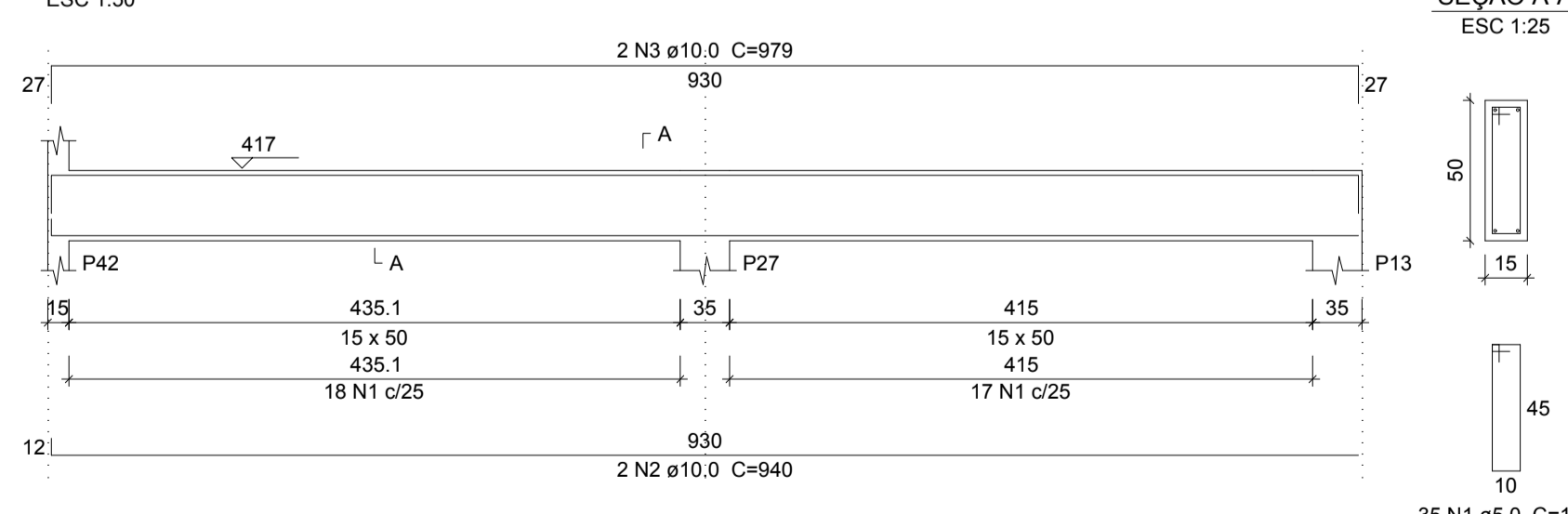
VR47
ESC 1:50



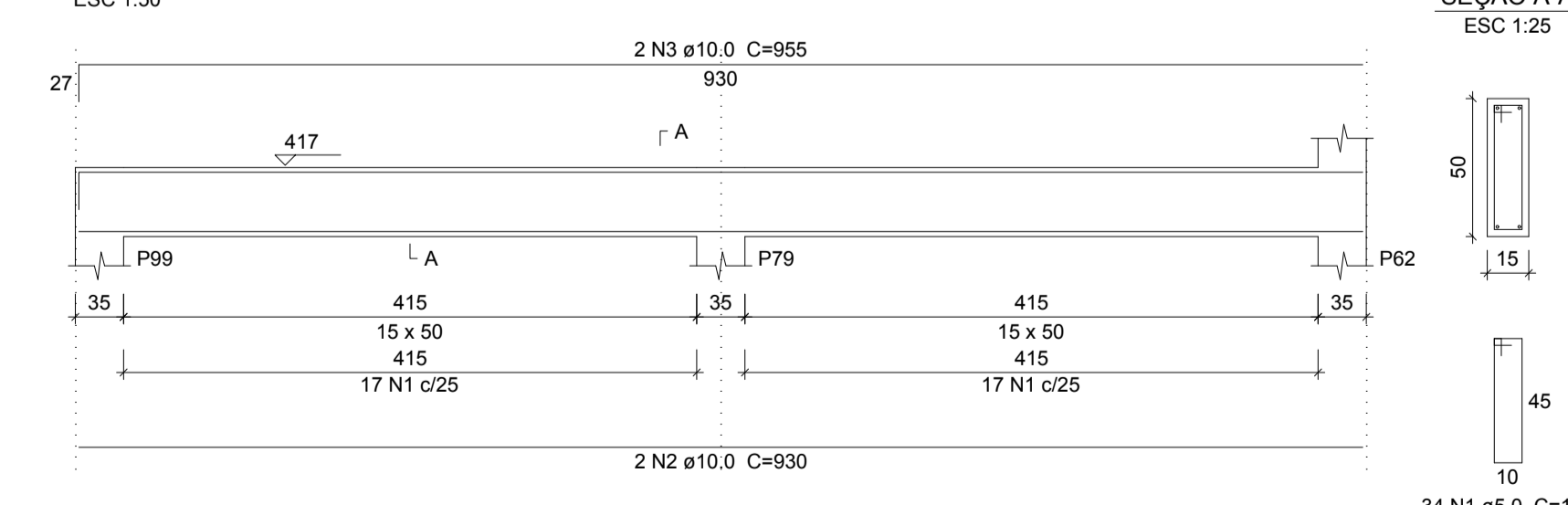
VR48
ESC 1:50



VR49
ESC 1:50



VR50
ESC 1:50



Relação do aço

ELEMENTO	AÇO	N	DIAM	Q	UNIT (cm)	C.TOTAL (cm)
VR41	CA60	1	5.0	34	122	4148
	CA50	2	10.0	2	930	1860
	CA50	3	10.0	2	955	1910
VR42	CA60	1	5.0	35	122	4270
	CA50	2	10.0	2	940	1880
	CA50	3	10.0	2	979	1958
VR43	CA60	1	5.0	18	122	2196
	CA50	2	10.0	2	530	1060
	CA50	3	10.0	2	579	1158
VR44	CA60	1	5.0	34	122	4148
	CA50	2	10.0	2	930	1860
	CA50	3	10.0	2	955	1910
VR45	CA60	1	5.0	34	122	4148
	CA50	2	10.0	2	930	1860
	CA50	3	10.0	2	955	1910
VR46	CA60	1	5.0	34	122	4148
	CA50	2	10.0	2	930	1860
	CA50	3	10.0	2	955	1910
VR47	CA60	1	5.0	18	122	2196
	CA50	2	10.0	2	530	1060
	CA50	3	10.0	2	579	1158
VR48	CA60	1	5.0	34	122	4148
	CA50	2	10.0	2	930	1860
	CA50	3	10.0	2	955	1910
VR49	CA60	1	5.0	35	122	4270
	CA50	2	10.0	2	940	1880
	CA50	3	10.0	2	979	1958
VR50	CA60	1	5.0	34	122	4148
	CA50	2	10.0	2	930	1860
	CA50	3	10.0	2	955	1910

Resumo do aço

AÇO	DIAM	C.TOTAL (m)	PESO (kg)
CA50	10.0	347.4	214.1
CA60	5.0	378.2	58.3
PESO TOTAL			
CA50		214.1	
CA60		58.3	

Vol. de concreto total (C-25) = 6.41 m³
Área de forma total = 98.33 m²



TIPO DA OBRA:	REESTRUTURAÇÃO DA ESCOLA ESTADUAL JOSÉ ALVES BEZERRA		
PROPRIETÁRIO CPF OU CGC:	PREFEITURA MUNICIPAL DE PORTO DOS GAÚCHOS		
LOCAL E INSCRIÇÃO CADASTRAL:	Endereço: Av. Guilherme Meyer Município de Porto dos Gaúchos - MATO GROSSO		
AUTOR DO PROJETO: CREA:	Evelin Luani Montagna MT 039125		
RESPONSÁVEL TÉCNICO: CREA:	Evelin Luani Montagna MT 039125		
ESCALA: INDICADA	DATA: OUT/2019	ASSUNTO: PROJETO ESTRUTURAL: PLANTA DE ARMAÇÃO DOS PILARES VR41, VR42, VR43, VR44, VR45, VR46, VR47, VR48, VR49, VR50	FOLHA Nº 40/45
E S T A T I S T I C A			
ÁREAS:	% DE OCUPAÇÃO	COEF. APROVEIT.	Nº DE PISOS
VER PROJETO ARQUITETÔNICO	TÉRREO DEMAIS PAV.		01